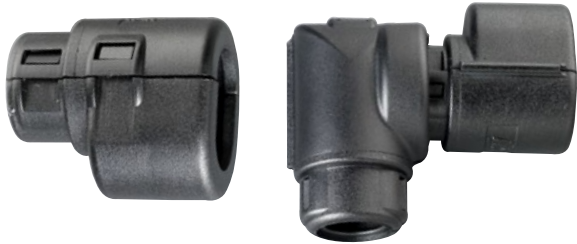


## TE AMP Superseal Connector interface



### Harnessflex® X-Temp™

Protection at temperatures between 200°C to -50°C with high vibration, dynamic conditions.

### TE AMP Superseal straight interface

Connector reference	Interface reference	Part No.	X-Temp™ Part No.	Conduit size			Nominal dimensions (mm)		
				NC	NW	US	A	B	C
282079-2*	1 way	CI06-AS1	CIH06-AS1	06	4.5	3/16	23.6	16.1	18.0
		CI08-AS1	CIH08-AS1	08	7.5	1/4	23.6	16.1	18.0
		CI12-AS1	CIH12-AS1	12	10	5/16	23.6	16.1	18.0
282104-2*	2 way	CI06-AS2	CIH06-AS2	06	4.5	3/16	22.4	20.5	18.0
		CI08-AS2	CIH08-AS2	08	7.5	1/4	22.4	20.5	18.0
		CI10-AS2	CIH10-AS2	10	8.5	5/16	34.0	21.0	20.0
		CI12-AS2	CIH12-AS2	12	10	5/16	22.4	20.5	18.0
282105-1*	3 way	CI08-AS3	CIH08-AS3	08	7.5	1/4	22.4	26.5	18.0
		CI10-AS3	CIH10-AS3	10	8.5	5/16	34.0	27.0	20.0
		CI12-AS3	CIH12-AS3	12	10	5/16	22.4	26.5	18.0
282106-1*	4 way	CI08-AS4	CIH08-AS4	08	7.5	1/4	34.0	33.0	18.0
		CI10-AS4	CIH10-AS4	10	8.5	5/16	34.0	33.0	20.0
		CI12-AS4	CIH12-AS4	12	10	5/16	34.0	33.0	19.0

\*All Colour and Wire variants / Colours available: Black ● RAL 9005 (Standard) / Brown ● RAL 8016 (X-Temp™).

### TE AMP Superseal 90° elbow swivel interface

Connector reference	Interface reference	Part No.	X-Temp™ Part No.	Conduit size			Nominal dimensions (mm)		
				NC	NW	US	A	B	C
282079-2*	1 way	CI06-90-AS1	CIH06-90-AS1	06	4.5	3/16	37.5	30.3	18.0
		CI08-90-AS1	CIH08-90-AS1	08	7.5	1/4	37.5	30.3	18.0
282104-2*	2 way	CI06-90-AS2	CIH06-90-AS2	06	4.5	3/16	33.3	30.3	18.0
		CI08-90-AS2	CIH08-90-AS2	08	7.5	1/4	33.3	30.3	18.0
		CI10-90-AS2	CIH10-90-AS2	10	8.5	5/16	35.0	38.0	19.0
		CI12-90-AS2	CIH12-90-AS2	12	10	5/16	33.3	30.3	20.5
282105-1*	3 way	CI08-90-AS3	CIH08-90-AS3	08	7.5	1/4	22.4	26.5	18.0
		CI10-90-AS3	CIH10-90-AS3	10	8.5	5/16	35.0	38.0	19.0
		CI12-90-AS3	CIH12-90-AS3	12	10	5/16	33.3	30.3	26.7
282106-1*	4 way	CI08-90-AS4	CIH08-90-AS4	08	7.5	1/4	33.3	30.3	18.0
		CI10-90-AS4	CIH10-90-AS4	10	8.5	5/16	41.2	38.0	19.0
		CI12-90-AS4	CIH12-90-AS4	12	10	5/16	37.0	30.3	33.0

\*All Colour and Wire variants / Colours available: Black ● RAL 9005 (Standard) / Brown ● RAL 8016 (X-Temp™).

## TE AMP Junior & Mini timer

Connector interface



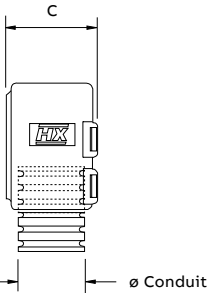
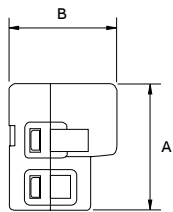
### Harnessflex® X-Temp™

Protection at temperatures between 200°C to -50°C with high vibration, dynamic conditions.

<sup>5/16</sup>

### TE AMP Junior & Mini timer straight interface

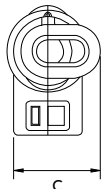
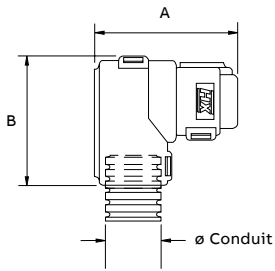
Connector reference	Interface reference	Part No.	X-Temp™ Part No.	Conduit size			Nominal dimensions (mm)		
				NC	NW	US	A	B	C
347887-3*	2 way	CI06-AM2	CIH06-AM2	06	4.5	<sup>3/16</sup>	24.9	21.3	18.0
		CI08-AM2	CIH08-AM2	08	7.5	<sup>1/4</sup>	24.9	21.3	18.0
		CI10-AM2	CIH10-AM2	10	8.5	<sup>5/16</sup>	37.0	21.0	19.0
		CI12-AM2	CIH12-AM2	12	10	<sup>5/16</sup>	24.9	21.3	18.0
1-827578-1*	3 way	CI08-AM3	CIH08-AM3	08	7.5	<sup>1/4</sup>	24.9	27.2	18.0
		CI10-AM3	-	10	8.5	<sup>5/16</sup>	37.0	27.0	19.0
		CI12-AM3	CIH12-AM3	12	10	<sup>5/16</sup>	24.9	27.2	18.0
281804-1*	4 way	CI08-AM4	CIH08-AM4	08	7.5	<sup>1/4</sup>	37.0	32	19.0
		CI10-AM4	-	10	8.5	<sup>5/16</sup>	37.0	32.0	19.0
		CI12-AM4	CIH12-AM4	12	10	<sup>5/16</sup>	37.0	32.0	19.0



\*All Colour and Wire variants / Colours available: Black ● RAL 9005 (Standard) / Brown ● RAL 8016 (X-Temp™).

### TE AMP Superseal 90° elbow swivel interface

Connector reference	Interface reference	Part No.	X-Temp™ Part No.	Conduit size			Nominal dimensions (mm)		
				NC	NW	US	A	B	C
347887-3*	2 way	CI06-90-AM2	CIH06-90-AM2	06	4.5	<sup>3/16</sup>	35.7	30.3	21.3
		CI08-90-AM2	CIH08-90-AM2	08	7.5	<sup>1/4</sup>	35.7	30.3	21.3
		CI10-90-AM2	CIH10-90-AM2	10	8.5	<sup>5/16</sup>	37.5	38.0	21.3
		CI12-90-AM2	CIH12-90-AM2	12	10	<sup>5/16</sup>	35.7	30.3	21.3
1-827578-1*	3 way	CI08-90-AM3	CIH08-90-AM3	08	7.5	<sup>1/4</sup>	35.7	30.3	27.2
		CI10-90-AM3	CIH10-90-AM3	10	8.5	<sup>5/16</sup>	37.5	38.0	27.2
		CI12-90-AM3	CIH12-90-AM3	12	10	<sup>5/16</sup>	35.7	30.3	27.2
281804-1*	4 way	CI08-90-AM4	CIH08-90-AM4	08	7.5	<sup>1/4</sup>	39.5	30.3	32.0
		CI10-90-AM4	CIH10-90-AM4	10	8.5	<sup>5/16</sup>	41.2	38.0	32.0
		CI12-90-AM4	CIH12-90-AM4	12	10	<sup>5/16</sup>	39.5	30.3	32.0



\*All Colour and Wire variants / Colours available: Black ● RAL 9005 (Standard) / Brown ● RAL 8016 (X-Temp™).